



## **Canterbury Reflective Practice Day**

**30<sup>th</sup> April 2015**

**The Tea House**

**Riccarton Park, 165 Racecourse Road, Christchurch**

**Programme**





**Canterbury Reflective  
Practice Day  
30<sup>th</sup> April 2015**  
*Draft as at 24/04/2015*



<b>8:30-8:45am</b> <b>Arrival/Networking</b>		
8:45am	Karakia and setting the scene	Hector Matthews and Tanya McCall
9:10am	Keynote – What is HiAP?	Rob Quigley
9:20am	Keynote History of HiAP in Canterbury	Dr Anna Stevenson
10:10am	Breakout Session – What’s different about the HiAP approach?	Sandy Brinsdon
<b>10:40 – 11:00am</b> <b>Morning Tea</b>		
11:00am	Whanau Ora/ HIAP: the challenges experienced and possible ways forward in Canterbury	Ramon Pink – Introduce and Chair Arihia Bennet Hector Matthews Alison Bourn
11:30am	Breakout Session - HiAP and the Treaty	Tanya McCall
<b>12:00-1:00pm</b> <b>Lunchtime and Awards</b>		
1:00pm	Bill Bayfield – ECan CEO	
1:30pm	International Pre-recorded Presentations: <i>Dr Rajiv Bhatia</i> <i>Carmel Williams</i> <i>Dr Andrew (Andy) Dannenberg, MD, MPH</i> <i>Dr Iain Butterworth</i>	
2:00pm	David Meates – CDHB CEO	
2:30pm	Summary of evaluations undertaken	Dr Jackson Green
<b>2:45-3:00pm</b> <b>Working Afternoon Tea</b>		
3:00pm	Breakout Session -What might the future look like?	Tanya McCall
3:30pm	Summary of feedback from the day	Sandy Brinsdon
3:45pm	Setting 10 year goals	Tanya McCall
4:15pm	What will we do differently tomorrow?	Tanya McCall
4:30pm	Karakia	





**Robert Quigley** is director of Quigley and Watts Ltd, a Wellington based company of 7 staff that supports individuals and organisations to create thriving communities. Robert has worked at the Ministry of Health in New Zealand, the Health Development Agency in England and the World Health Organization in Geneva. Robert's current role is to support agencies when developing complex policies and plans that may affect communities. He is also an experienced researcher and facilitator.

Robert is an experienced HIA and HiAP practitioner, strategist, trainer and author. Recently, Robert developed and delivered the World Health Organization's first international course on Health in All Policies (delivered to 35 nationalities in Adelaide). He has worked within and across multiple sectors including local and regional government, transport, energy and the social sectors. He is the lead author on the joint International Association of Impact Assessment and World Health Organization 'Principles and Practice of HIA', 2006.



**Dr Anna Stevenson** works as a public health physician at the Canterbury District Health Board. Anna was the project lead for the 2005 Health impact assessment on the Greater Christchurch Urban Development Strategy. Since then she has pioneered a work programme which has spanned a number of sectors and agencies including transport, urban design, resource sustainability, and Local and regional government. She leads the Health in all Policies team which aims to ensure that population health is explicitly considered and is a key focus for policy and projects across sectors and within the CDHB. Anna co-chairs the CDHB's "Sustainability 4 Health' group, is the appointed public health representative on the Regional Transport Committee and is very excited about her recent purchase of an electric bike.



**Arihia Bennet** began her career in health and social services in 1979, as a Māori Affairs social services cadet in Christchurch. From 1981 to 2005 she worked for Child, Youth and Family, taking six years out to work in tourism.

In 2006, Arihia was appointed regional manager Te Waipounamu for Barnardos NZ. She held this position for five years. Prior to taking up her current position 2012, Arihia was Kaiārahi/Chief Executive Officer of He Oranga Pounamu (HOP), an organisation mandated by Ngāi Tahu to organise and integrate health and social services in the Ngāi Tahu rohe.

Arihia has held advisory positions to government, including Canterbury Earthquake Recovery Commissioner (CERC) following the September 2010 earthquake. She has held governance roles





associated with Te Rūnanga o Ngāi Tahu, including Ngāi Tahu Development Corporation, where she was a director from 1999-2002, and then chair until 2005.

In 2008, she was made a Member of the New Zealand Order of Merit for services to Māori and the community. Arihia has worked with tamariki, whānau and communities throughout her career. She has also worked alongside Papatipu Rūnanga from a voluntary or community point of view and she views her current role as a chance to fuse the two together.



**Hector Matthews** is of Te Rarawa and Te Aupouri descent from the far north and is married with three children. Hector left the Regular Force of the New Zealand Army in 1992 with the rank of Captain, to manage Ngā Hau E Whā National Marae in Christchurch. In 1996 he was seconded to the United Nations as Military Observer in Israel and Syria for 12 months, before returning to Canterbury to take up the position of Business Development Manager in Crown Public Health. Hector was given the added responsibility for Hauora Mātauraka, the Māori Health Promotion team of Crown Public Health, in 2001 before taking up the position of Executive Director, Māori and Pacific Health in 2004.

Hector tutors in the use of taiaha (traditional Māori long club). Hector has a post graduate diploma in Telecommunications from Swinburne University of Technology, Melbourne and is a Nidan (2nd Degree black belt) in Seido Karate.



**Alison Bourn** - hails from the Horowhenua, the daughter of English migrants who travelled to NZ on the boat, Captain Cook, in 1955.

She came to Christchurch after many years living and working in Whanganui joining the Public Health Unit in 2009 as its first HIA Project Officer.

Alison now leads Te Puawaitanga Ki Otautahi Trust, a kaupapa Maori organisation established by the Otautahi branch of the Maori Women's Welfare League.

Te Puawaitanga's services are by design targeted for Maori and are outreach, being delivered in the home.

Alison holds a degree in Nutrition and Food Science and a post grad in management. Her experience includes leading organisations, teams and projects across a range of sectors including central and local government, community organisations and in business, both in New Zealand and in Melbourne.





**Dr Jackson Green** Jackson completed a PhD in Physiology in 2011. His research into type 2 diabetes convinced him that the solution to most modern health problems will come through physical environments and behaviour change rather than medicine. He now works as a Public Health Analyst and has been responsible for evaluating much of Community and Public Health's recent HIAP work.





## CHIAPP Award Judges



### CHIAPP Awards Judge

#### Dr Matthew Soeberg

Matthew has a wide range of expertise in the area of public health. He is currently employed as an epidemiologist with the Asbestos Diseases Research Institute, Sydney, Australia. He has also worked as a research fellow at the Sydney School of Public Health working on various cancer epidemiology research projects. Matthew has also worked in the area of health impact assessment for the Ministry of Health's health impact assessment unit and WHO. Matthew completed his PhD with the University of Otago, Wellington, focusing on trends in cancer survival in New Zealand.



### CHIAPP Awards Judge

#### Dr Patrick Harris

Patrick is a senior research fellow at the Menzies Centre for Health Policy, University of Sydney. He is an NHMRC Early Career Fellow and is a CI on an NHMRC Centre for Research Excellence on the 'Social Determinants of Health Equity: Policy research on the social determinants of health equity'. His research focusses on population health, health equity and public policy. His expertise is in the inclusion of health in public policy, specifically the use of health impact assessments, the links between health and land use planning and the inclusion of health in environmental assessments of major development projects. Methodologically his research is based in combining (critical) realism and new institutionalist approaches to policy analysis. Patrick is an applied researcher and has worked across Australia and internationally with the health sector and other sectors to improve considerations of health and health equity in policy and planning. To date he has published over 65 articles, book chapters, and reports based on his research and practice. In addition to his NHMRC funded work his current projects include; research with the NSW Heart Foundation, NSW Health and the NSW Premiers Council for Active Living to investigate how, why and the extent to which health was considered in the 2011-2013 review of the NSW Land-Use Planning legislation; a Henry Halloran Trust 'Blue Sky' Project investigating the inclusion of health in major transport infrastructure project environmental assessments



## CHAIPP Awards Judge

### Dr Ben Harris-Roxas

Ben has been a consultant since 2011/ operating his own consultancy and working for other companies. Prior that he worked as a Research Fellow in the at the [Centre for Primary Health Care and Equity](#) at the University of New South Wales, where he is still a Conjoint Lecturer.

Ben specialises in health impact assessment (HIA), program evaluation, capacity building and communications. Ben has worked with clients from Commonwealth, state and local governments as well as with NSW local health districts, private sector clients, universities and non-governmental organisations. He has supported and conducted more than 30 HIAs and trained more than 600 people in health impact assessment.

Ben has a PhD from the University of New South Wales on the effectiveness of health impact assessment in health service planning. He also has a Master of Policy and Applied Social Research degree from Macquarie University and a Bachelor of Social Work from the University of New South Wales.

Ben has been an investigator on research projects funded by the Australian Research Council, the Australian National Health and Medical Research Council and the Canadian Institutes of Health Research. He has published 26 peer-reviewed articles and book chapters and is an Associate Editor for [BMC Public Health](#) and [Environmental Impact Assessment Review](#). He is a member of the [Croakey Health and Medical Panel](#), which is a prominent Australian blog dealing with health service and public health issues.

Ben is currently Health Section Co-Chair of the [International Association for Impact Assessment](#) and is a member of the [International Union for Health Promotion and Education's](#) Global Working Group on HIA. He is also a member of the NSW Committee of the [Australasian Evaluation Society](#). Ben has advised the [World Health Organization's Centre for Health Development](#) and the Western Pacific Regional Office on HIA and intersectoral action for health. He is a member of the [Society of Practitioners of HIA](#) and has served on its steering committee.



## Canterbury Health in All Policies Reflective Practice Day International Speakers

We have been fortunate to get input from several international HiAP practitioners who will share their wisdom during the day. These include:



### **Dr Rajiv Bhatia**

Rajiv is a physician and population health expert providing insights, strategies, and solutions to strengthen the community and economic roots of health.

Rajiv has pioneered several public health practice innovations, including health impact assessments of public policies, neighborhood health indicators for monitoring urban growth and development, and open data for environmental regulation. His work has demonstrated new roles for the health sector in solving complex social problems and has brought health information and arguments to successful legislative campaigns for higher minimum wages, universal paid sick days, pedestrian safety, and environmental protections. Rajiv created and led the Program on Health Equity and Sustainability at the San Francisco Health Department, which became an invaluable resource for community health advocates and a national model for Health in All Policies.



### **Dr Andrew (Andy) Dannenberg, MD, MPH**

Andy Dannenberg provides content expertise in the area of public health and the built environment. His current research includes a focus on the use of health impact assessments.



**Dr Iain Butterworth** Iain is a community psychologist with a strong interest in the interrelationship between urban design, planning, governance and well-being. Iain has worked in community development, government, higher education and consulting.

In 2003-2004 Iain was a Fulbright Visiting Scholar at the School of Public Health at the University of California at Berkeley. Iain worked with Prof Leonard Duhl MD, Professor of Public Health and Urban Planning to explore how the World Health Organisation's Healthy Cities approach could help build community capacity, and connect people better to place. Whilst at Deakin University from 2004-2009, Iain helped to establish both an interdisciplinary post-graduate planning degree and the university's community engagement agenda. Iain is currently Manager Liveability and Sustainability with Eastern and Southern Metropolitan Health for the Department of Health & Human Services, Melbourne. He is heavily involved in his department's Place, Health and Liveability research partnership with





the University of Melbourne, where he is an honorary Associate Professor with the School of Population and Global Health. Iain is an Industry Partner and member of the Victorian Advisory Group for the five-year NHMRC National Centre for Research Excellence for Healthy, Liveable and Equitable Communities.



**Carmel Williams** - Ms Carmel Williams is the Manager of the Strategic Partnerships Unit, South Australian Department for Health and Ageing, which incorporates the work she lead as Manager of the former Health in All Policies Unit. She has substantial expertise in health promotion policy development and practice, with a particular emphasis on the inter-sectoral approaches which have been instrumental in moving South Australia’s Health in All Policies approach from conceptual development to practical implementation.

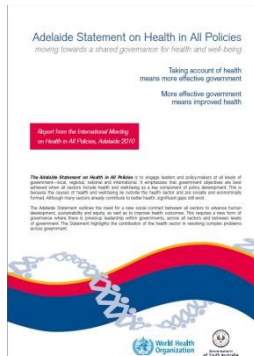
Carmel has a long and extensive experience in the field of health promotion and public health, working at national and international levels including the World Health Organization.

Dr Patrick Harris, one of the judges for the inaugural CHiAPP award will be present to discuss the judging process and celebrate with the winners at the end of the day. The nomination process is easy – do you know anyone who should apply?

The reflective day will be an excellent grounding for the NZ HiAP conference the following day. We are honoured to have keynote speakers who are outstanding in their fields including Sir Prof Peter Gluckman, Ana Apatu and Henare O’Keefe, Dr Susan Morton and Prof Paul Dalziel.

**Pre Reading**

**Adelaide Statement**



We also recommend watching the TED talk by Dr Renaisa Anthony titled A Recipe for Health Equity in the 21st Century: <https://m.youtube.com/watch?v=ywQJGnzQKGs>

