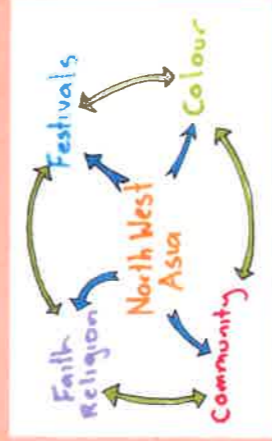


Client Brief

An opportunity has arisen for the culturally diverse communities of Christchurch to come forth and take part in the creation of a tranquil walkway as a temporary part of the Christchurch rebuild. By researching and pulling together a character which expresses the philosophical, spiritual and cultural traditions of a diverse CaLD community the aim is to design an area which feels familiar and peaceful to the community. Amidst the damaged city, communities are looking for a tranquil place of healing, an 'oasis' away from it all. The design as well as focusing on the chosen community should be accompanying of all communities as a place where anyone is able to find tranquility. The design is to be created with sustainability in mind and able to be de-constructed and rebuilt easily.



Background Information



The relations between aspects of the diverse cultures

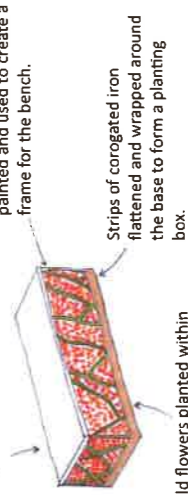
North West Asia is a immensely diverse area with a whole multitude of cultures, religions, philosophies and spiritualities. Large aspects of the area include Faith and Religion, Festivities, Colour, and community. All of these aspects are synonymous with one another and all layer up creating an identity of the greater area of North West Asia. Festivals are a part of life they represent the people of their area and their diverse array of cultures. One such festival is the Holi Festival. The colourful festival is celebrated on Phalgun Purnima in early February. The Holi festival brings communities, thousands of people together as a whole in a day of joyous celebration. The colourful festival bridges the social gap and renews warm relationships. On this day, thousands of people come together as one. People hug and wish each other 'Happy Holi'. The colours, festivals, religions and beliefs all tie the community together as a common thread through out.

Sustainable Design

Materials used in this design would be recycled and sought from quake damaged sites around Christchurch to both reduce the cost and find a use for masses of debris following the earthquakes. The following diagrams show possible materials and ways of creating sustainable aspects of the design.

Possible seat design

A top made from material which lets water as well as sunlight through to feed the flowers.



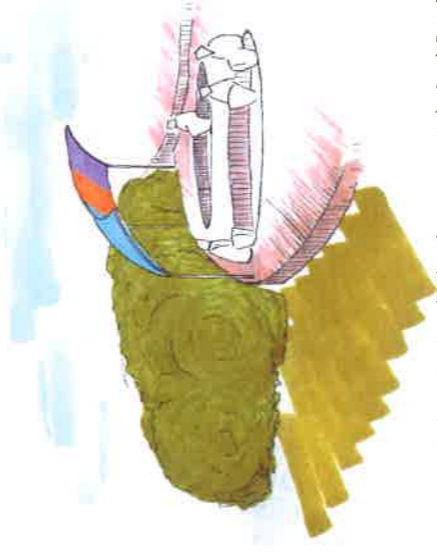
Wild flowers planted within the bench and grow out from it.

Design Statement

The overall focus and intention of my design is to create an inviting place of tranquility which embodies a collective character that expresses the philosophical, spiritual and cultural traditions of the diverse CaLD community representing North West Asia. A place where anyone can visit as a place of healing away from our constantly changing city.



Sketch of the seperated area intended for individuals or very small groups to find peace in tranquility.

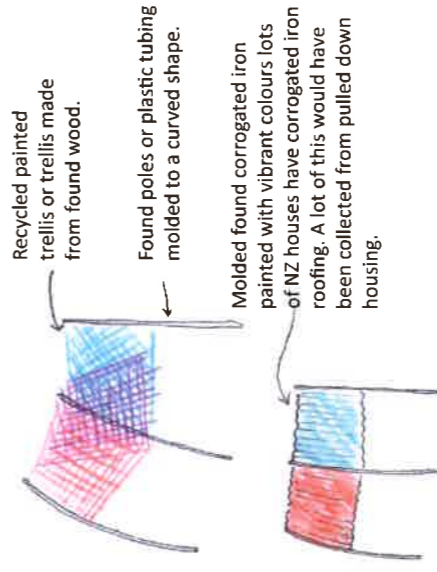


Sketch of social pods under the vibrant canopy in the South East tier.



Sketch of the site opening up onto the bank of the Avon river showing possible access point via gondola and views of different areas.

Possible design for canopies



Found wooden panelling could be sanded down just enough to reveal patches of pink primer a colour significant to certain areas.



Design description

My design aims to create through the abstraction of values an area which responds to the vibrant multilayered area which is North West Asia.

Colour

The use of vibrant colours in the choice of materials and planting is a representation of the multitudes of outlooks, lifestyles, traditions and overall cultures of North West Asia inspired by the festive colours of particular countries and religions. For certain countries within this area colour has become synonymous with faith and religion in such a diverse area it is a common thread which ties people together. These colours have been represented using both a variety of flowers and over top canopies of layered coloured materials resembling the colourful over lapping layers of traditional wear. Members of this community will respond to this aspect with a sense of place, a connection tying them back to their origins and to one another.



Layers

The multi layered layout expands on the first aspect it is a representation of a multilayered collective of diverse cultures which come together as a whole. Symbolic representations of this can be seen through out the area from the layered petals of flowers to the layered fashion of traditional garments. The layering of garments has been reflected in the design of the canopy with vibrant coloured materials over lapping one another.

Social/ Private

The greater area as well as being a very social festive place also has a respect for peace and tranquility with many religions taking part in meditation. It is for this reason that I have designed different pockets intended for different levels of social interaction. Quiet separated areas apart from the central areas designed to fit few bodies are intended as a place where those who desire a place of reflection and silence will find tranquility, while larger open pockets are intended for larger groups to socialise in this tranquil environment. Entrance ways to these specific areas are sized in a way to attract different sized groups wide open paths lead to the social areas while the paths to the quieter areas are far narrower deterring larger groups.

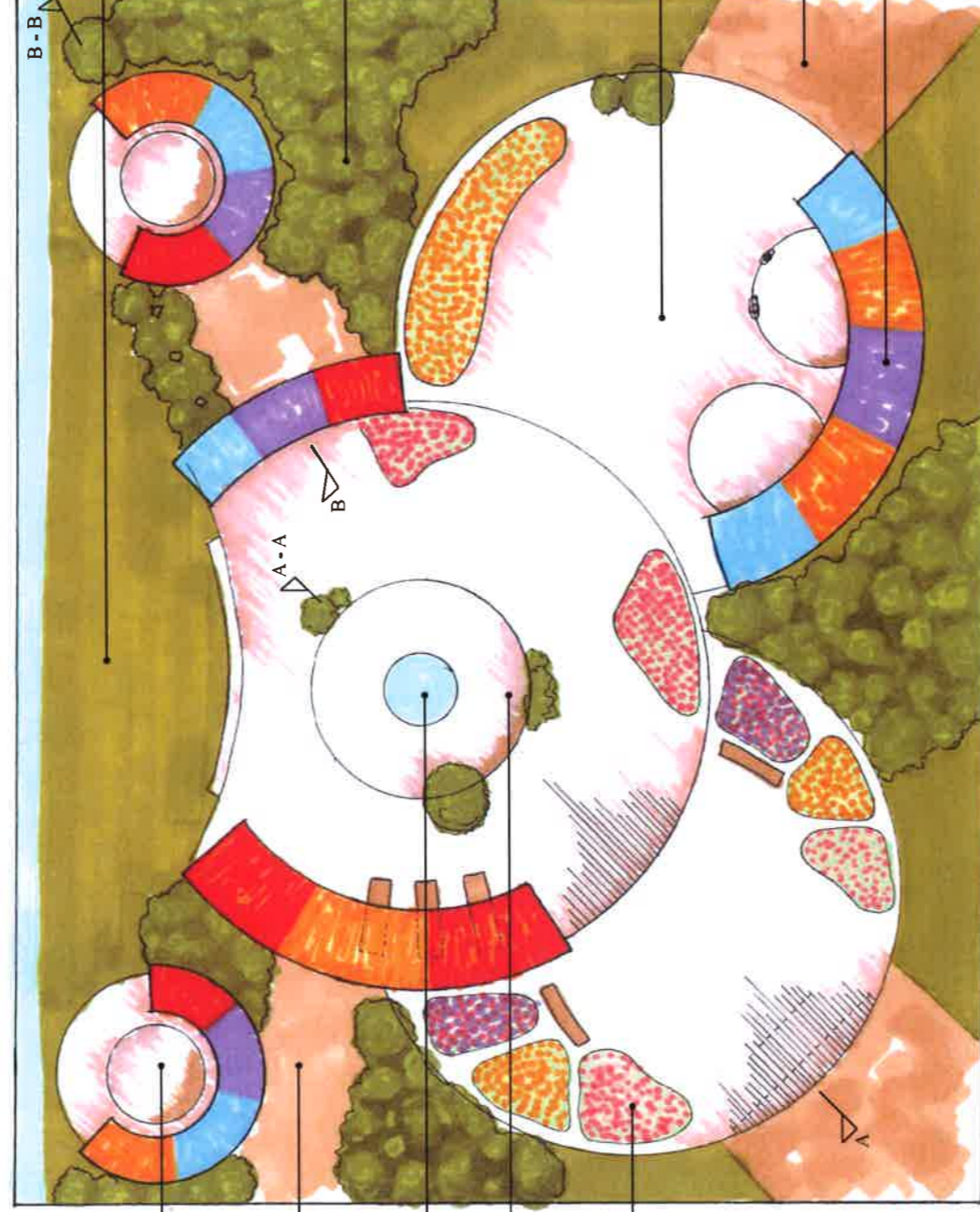
Smaller separated areas designed as a private place of individuals or few people a place where those who desire a place of reflection and silence will feel tranquil.

Narrow pathways to quieter areas deter larger groups.

Central water feature a view point for those sitting around the seating area.

Large social pocket fitting many people all facing inwards on each other.

Plantations of various flower species with a vibrant array of colours.



Central tier opens up to the bank of the Avon river allowing views and a forth entry point via christchurch's gondolias.

Areas of trees and shrubs create barriers separating areas from one another.

Circular tiers create a multilayered aspect to the site stacked on top of one another.

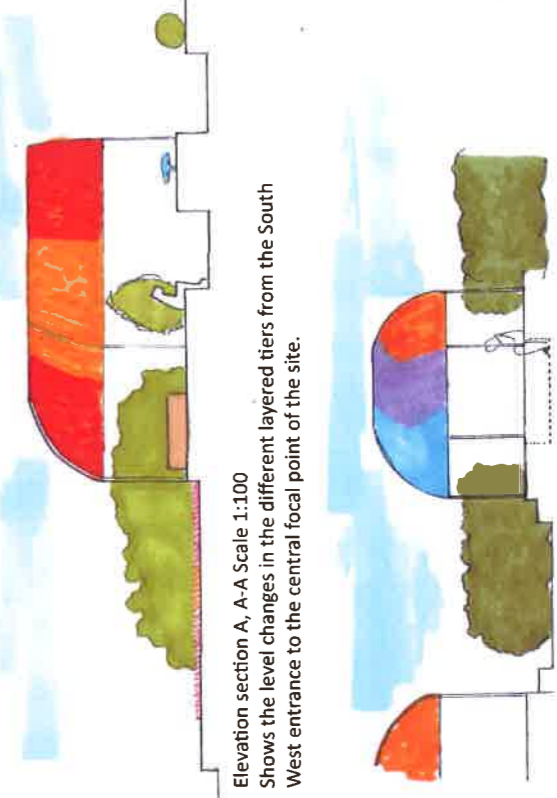
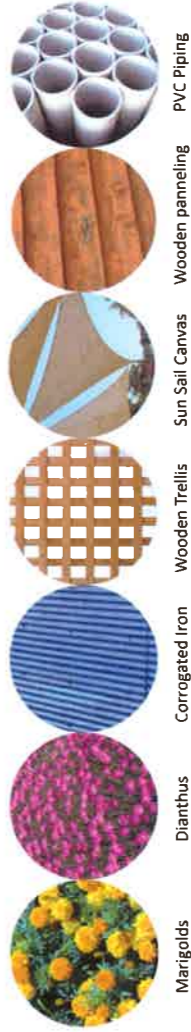
Larger open entrance pathways attract groups to social areas of the site.

Canopies provide shade while adding vibrant colour to the site.



Possible materials

The following materials have been considered with sustainability in mind reclaiming materials left from the damage of the earthquakes.



Elevation section A, A-A Scale 1:100 Shows the level changes in the different layered tiers from the South West entrance to the central focal point of the site.

Elevation section B, B-B Scale 1:100 Shows the level changes and scale from the central focal point of the site to the separated quiet pocket in the North East corner.

