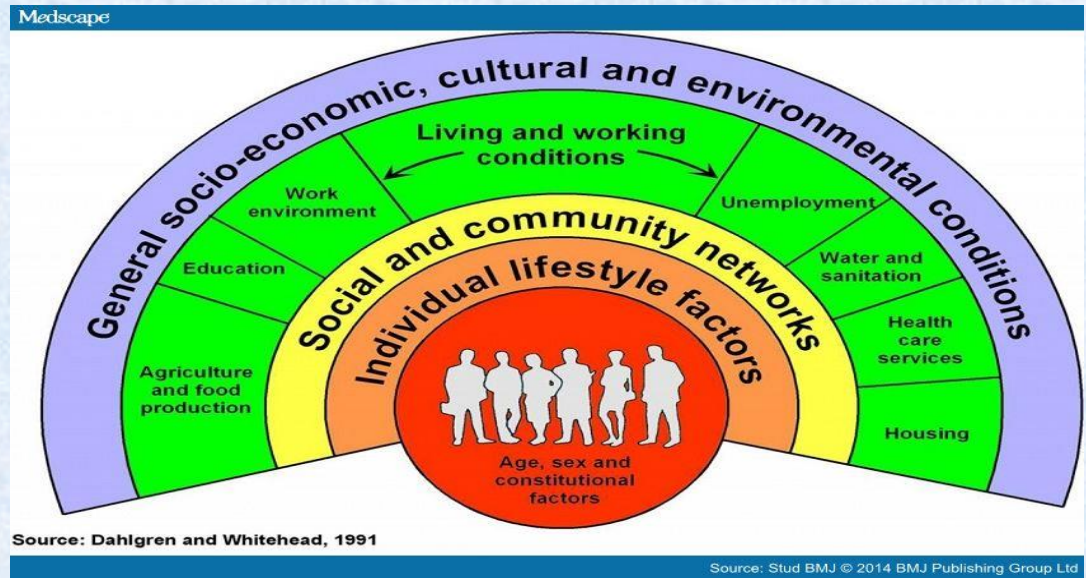


Alcohol Harm Minimisation Advisory Group (AHMAG) and work programme

Alcohol impacts widely across the determinants of health.

AHMAG is a multi-agency partnership that has grown in recognition of the complexity of the response needed.



Alcohol Harm Minimisation Advisory Group (AHMAG) and work programme

Those partnerships are producing new collaborations and innovative activity...



Canterbury Alcohol Symposium Programme

The Canterbury Alcohol Symposium is an opportunity for relevant agencies to network, showcase their activities, and meet Partnership Health's new Alcohol Harm Minimisation Co-ordinator, Stuart Dodd.



Christchurch and the Alcohol

Canterbury

Canterbury Alcohol Symposium 2013

Drinking & Pregnancy

No alcohol in pregnancy is the safest choice for your

EN

Friday 7th November 2013

How many Standard Drinks did you have this week?

This is around one Standard Drink

- Half pint (330 ml) of beer at 4% alc
- 100ml glass of wine at 12.5% alc
- A single 30ml measure of spirits

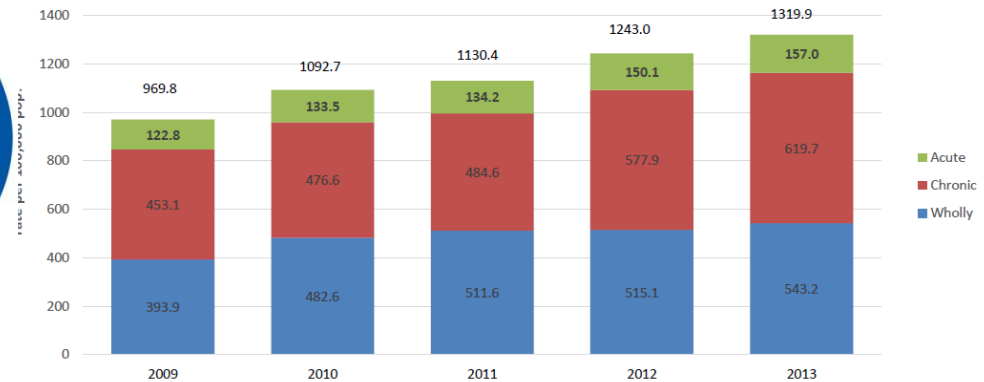
NOTE: how one Standard Drink is compared to a typical serving below

...and each of these is more than one Standard Drink

- 1.9
- 2.4
- 1.3
- 1.5
- 1.7



AAF Weighted Hospital Admissions - Christchurch Residents Aged 20+ - Age Standardised Rate Per 100,000 Population, 2009 to 2013



Alcohol Harm Minimisation
Advisory Group (AHMAG)
and work programme

Those activities
will continue to
make
considerable
in-roads in to
alcohol harm
reduction.

